



Natural Gas Flow Metering

As corporations and governments set ambitious Net-Zero mandates and other energy efficiency targets, there is a critical need to monitor, manage and reduce natural gas consumption.

While natural gas contributes to global CO2 emissions, it's also a critical fuel source necessary for heating and powering our homes and commercial buildings. Global carbon taxes and international demand continue to drive up natural gas costs, incentivizing governments and utility operators to optimize their gas use.

Understand your gas use by deploying effective metering and reporting software.

Case studies have identified that the simple act of metering natural gas reduces consumption by 10-20%, as large anomalies are easily detected by submetering and interval data. "Low-hanging fruit" like these, and further reductions, are found through a thorough review of the meter data and continuous commissioning.

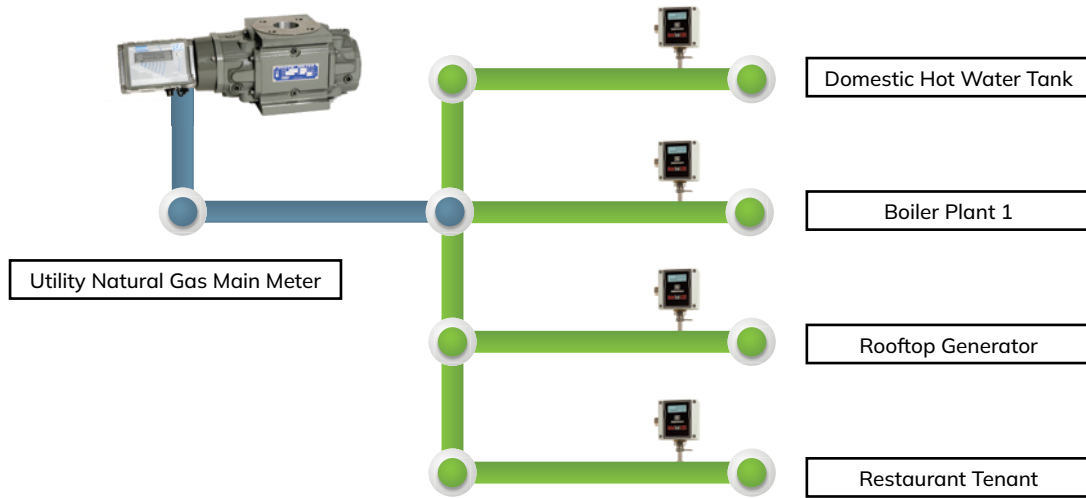
The instant cost savings allow many gas utilities to completely subsidize the supply and install of the metering and energy monitoring software.

SRB Controls has been providing natural gas flow meters for over 25 years.

The Sierra 620S-BT Boiler Trak is designed specifically for measuring natural gas over a wide range of flow rates, gas pressures and temperatures in different sized pipes.

It is easy to install and can connect directly to your BAS or QMC's MeterConnex™ software.

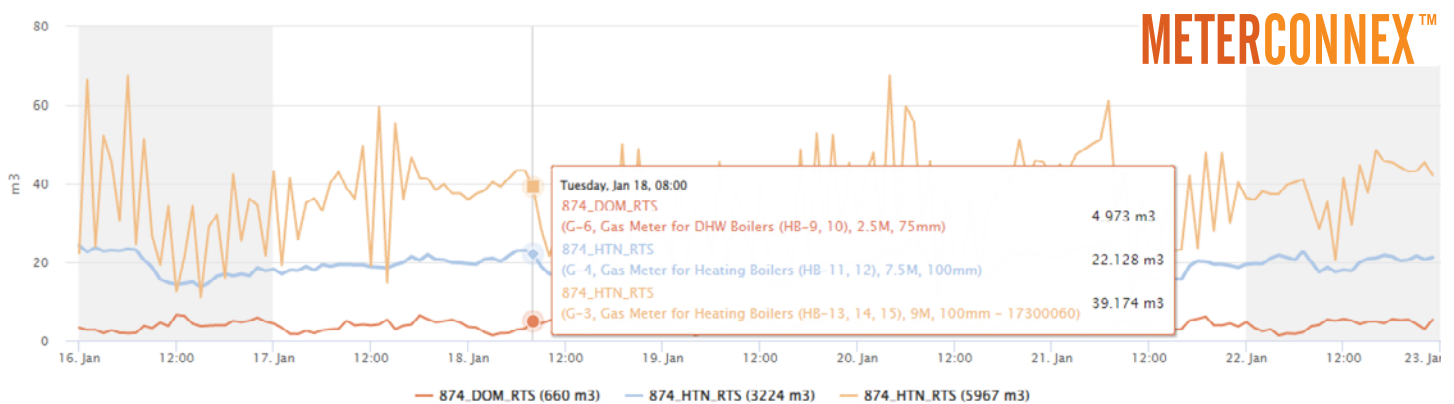




Sierra 620S-BT Boiler Trak Features

- Simple rugged design for easy installation into different sized pipes.
- Wide turndown of 100:1 gives you the ability to pick-up very low flow rates and gas leaks.
- High accuracy & repeatability for natural gas or more
- No Moving parts to wear out and replace.
- Automatic pressure and temperature compensation.
- Current 4-20ma, Pulse and Modbus digital communication.
- Negligible pressure drop.

Meters are only fully utilized when combined with a powerful and easily accessible meter data collection and reporting system. This allows all meters' interval data to be reviewed, reported on and even have alerts set, from one platform. [MeterConnex is a meter data management system](#) that combines automated, daily meter interrogation with a cloud-based interface and is geared specifically towards system operators, property managers and energy consultants.



Example of 3 gas loads on MeterConnex

Please contact SRB to discuss your gas metering project. We can assist in the design and budgeting process and will then provide a turnkey solution, including all meters, services, data collection and reporting.

