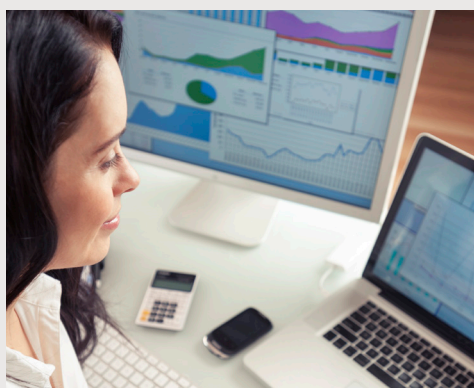




Building Intelligence with Submetering Solutions



Easily convert meter data into reports, bills or analytics



QMC's MeterConnex™ solves the problem of how to get meter readings out of your meters and into a meaningful format for analysis. This web-based energy reporting software allows building managers, operators and tenants access to their meter data online at anytime. MeterConnex™ has dozens of standard reports that can be used for tenant billing, LEED M&V energy management, or tenant engagement. Custom templates can also be developed to allow the meter data to be downloaded directly into your existing accounting or energy management software.

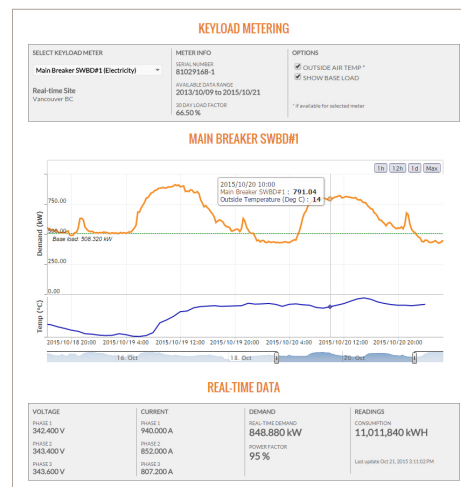
MeterConnex™ is meter agnostic, so it can integrate with most meter manufacturers' equipment, whether electrical, water, thermal or gas meters.

Key Features

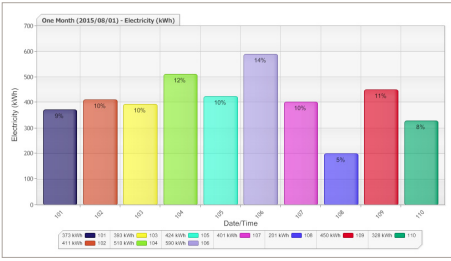
- Software as a Service:**
 Application Service Provider (web-hosted) model requires no on-site software installation, inhouse IT support, or the need to upgrade software. All features are accessed through a standard web browser.
- Meter Agnostic:**
 Ability to connect with multiple meter manufacturers' equipment and any utility type.
- Flexible Communication:**
 Several options for remotely connecting to meter systems, including phone line, IP, or cell modem.
- Tiered Access:**
 Tiered access levels allow individual tenants to see only their specific meter data while administrators can view meters across an entire portfolio.
- Energy Management Tools**
 Users have a full spectrum of analytical tools, such as usage and consumption reports, multiple graphing features, and billing system integration. Additional reporting tools include CO2 emissions, power factor, load duration, and regression models.
- Export Data:**
 Customized reports and Excel, CSV files along with other downloadable data formats available.
- Available on any Platform:**
 PC, Tablets or Smartphone.

Key Benefits

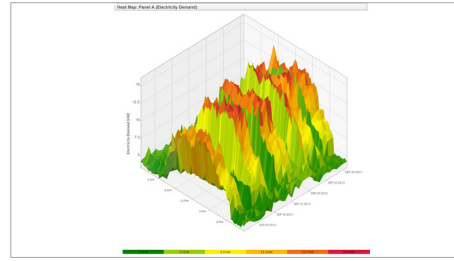
- One Portal for all Staff:**
 Accountants, LEED M&V accountants, consultants, operators and energy managers can all access a building's or portfolio's meter data quickly and easily from their own PC.
- Trak&Save Tenant Engagement Portal:**
 Allow tenant to engage in energy conservation through quick access to their energy consumption information.
- Get Results:**
 Energy management tools will allow your properties to identify poor energy performance, take action, and evaluate savings; all saving you from rising energy costs.



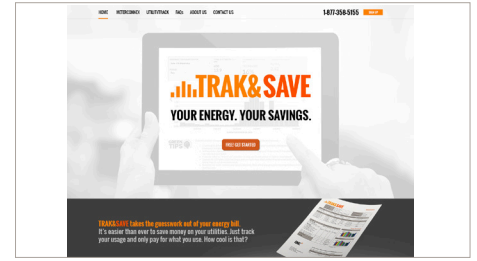
Sample Reports



Electricity, water, gas and thermal energy consumption can be viewed in annual, monthly, weekly and daily formats, down to 15 minute intervals. Graph styles include bar, line and pie. Use interval data to identify abnormal energy usage.



Compare key loads for LEED Measurement and Verification or compare tenant consumption to determine who to concentrate energy conservation measures on. Advanced analytics include weather regression, energy heat maps and real-time reading.



The Trak&Save tenant engagement portal allows tenants to view all their meter data on-line, so they can engage in and track energy saving activities. The interface is easy to navigate and automatically calculates energy, money, or CO2 savings over time periods.

Levels of Service

Lite	Residential	Utility	Commercial	Enterprise
No-Cost Model with Basic Features	Ideal for Stratas and Multi-Residential sites	Perfect for High Volume Needs	Best Option for Commercial Clients	Fully Capitalize on Big Data
<ul style="list-style-type: none"> Quick graphs Quick reports 	<ul style="list-style-type: none"> Track cost savings Carbon footprint data reports Ability to export data online Grant tenants access to data Meter Search tool MeterConnex™ API 	<ul style="list-style-type: none"> Quick graphs Quick reports Daily FTP push MeterConnex™ API Available data reports Meter Search tool Service Tickets tool Field Service tools 	<ul style="list-style-type: none"> Full access to graph data Online access to Consumption and Demand reports Download reports Portal views Field Service tools MeterConnex™ API 	<ul style="list-style-type: none"> Full access to graph data Full access to report data Full access to Portal/ Dashboard Real-time data pushed to Dashboard Access to Alerts Tools

Contact QMC for a Free Consultation*, Webinar, System Design and Budget for your LEED Metering or Key Load Metering Project

*Subject to terms and conditions. Please call for more details.



VANCOUVER
1 (604) 526 5155
sales@qcmeters.com

TOLL FREE
1 (877) 358 5155
www.qcmeters.com

ALBERTA
1 (403) 265 5155
sales@qcmeters.com

TORONTO
1 (416) 291 3079
sales@qcmeters.com

MONTREAL
1 (514) 241 7716
sales@qcmeters.com