

CRITICAL - Current Transformers (CT) must be installed correctly. See Diagram 1 for CT installation. See Diagram 3 for CT polarity.

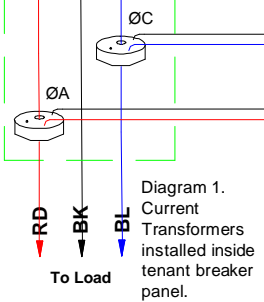


Diagram 1. Current Transformers installed inside tenant breaker panel.

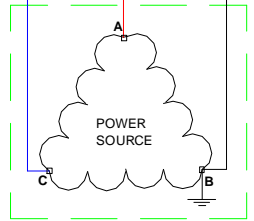


Diagram 2. Power Source. Grounding Options:
 1. Corner Grounded
 2. Center-tap Grounded
 3. Ungrounded

DIAGRAM FOR USE WITH THE FOLLOWING PRODUCTS:
 RSM5 480DTACL10 D
 RSM5 480DTACL10MD
 RSM5 480DTACL10RSD
 RSM5 480DTACL10 PD

Note:
 HCA-2 is used with a meter whose CTs have a secondary rating of 5A.
 Another set of CTs may be connected to totalize two loads in one RSM-5 meter.

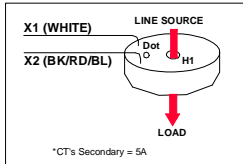


Diagram 3. CT Phasing. Dot or H1 should point towards the line or source.

			Quadlogic Controls Corporation	TITLE RSM-5 3-PHASE, 3-WIRE HCA WIRING DIAGRAM (CA)	
SIGNATURES		DATE		MODEL BKAU 07/19/06	
DETAIL		SIZE		DRAWING 17-RSM5 3P3WCL10REV2D	
APPROVED JKIM		xx/xx/xx		REV 2	
APPROVED JREA		xx/xx/xx		SCALE:	
				SHEET 1 of 2	